

Latest Evolution Of Concrete Paving



EUPAVE

EUROPEAN CONCRETE PAVING ASSOCIATION

April 14th Presentation



Myron Hillock

Sales Director

Somero Enterprises, Inc.



American Concrete Institute
Always advancing

ACI 330

- Commercial Concrete Parking Lots and Site Paving Design & Construction
- Concrete Site Paving for Industrial and Truck Facilities



AMERICAN SOCIETY OF
CONCRETE CONTRACTORS
Enhancing the Capabilities of Those Who Build with Concrete

Concrete Paving Committee

2005 to Date
Past Chairman





Why Concrete Paving

- Design Strength
- Durability
- Safety
- Lighting
- Curb Appeal
- Life Cycle
- Less Maintenance
- Texture
- Lower Heat Island
- Price & ROI

A Smart Business Choice



Concrete Paving Applications



- Ports
- Warehouses
- Truck Facilities
- Distribution Centers



Concrete Paving Applications

- Retail Shops
- Grocery
- Fuel Centers
- Municipal
- Offices
- Lodging
- Restaurants
- Education

Police / Fire / Public Works

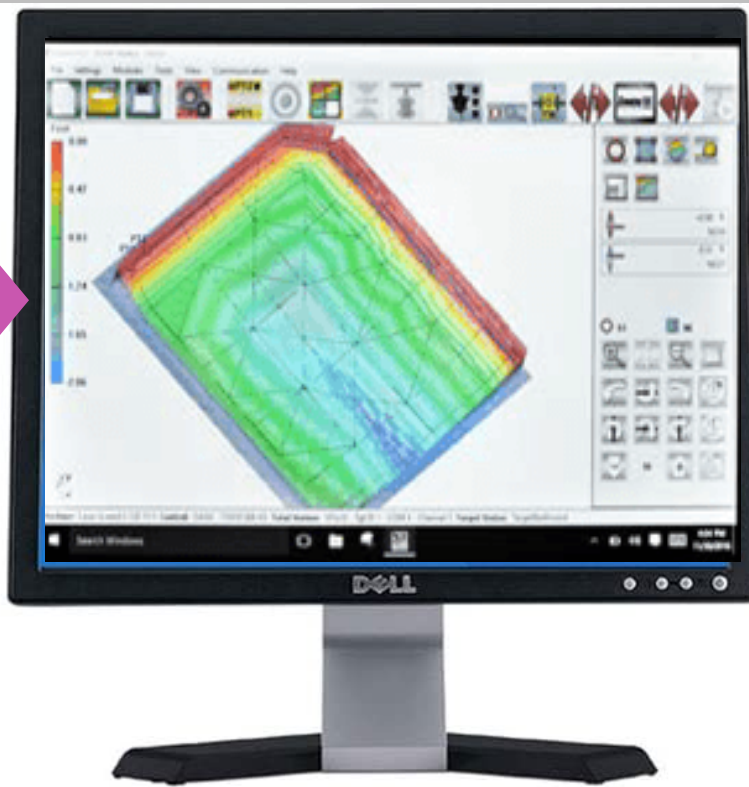


3-D Integration



3D Modeling





3D Modeling





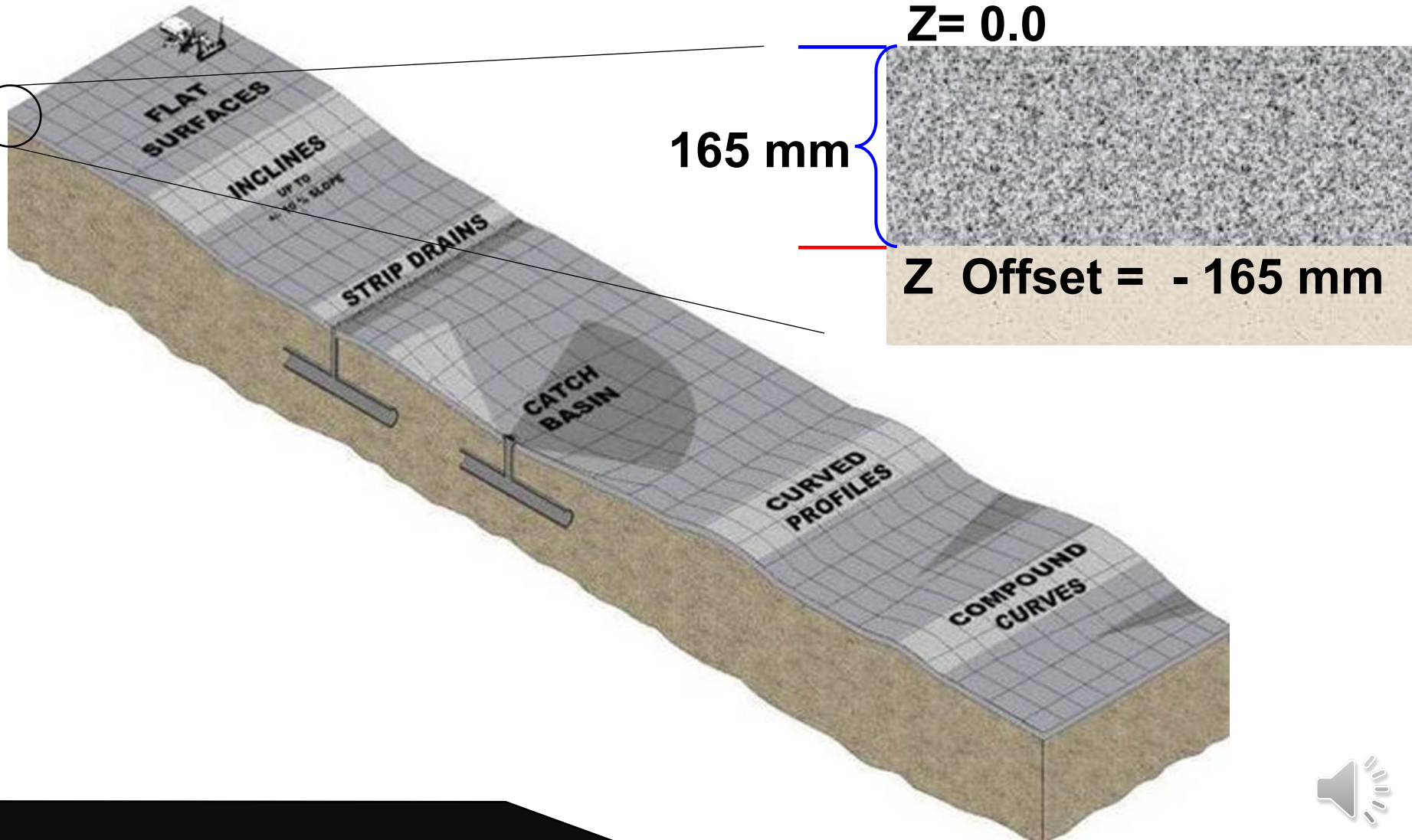
3D Layout



3D Fine Grading



3D Fine Grading



3D Fine Grading

Project:

92,900 m² FedEx Distribution Center

Toledo, OH

*Concrete Contractor: Merlo
Construction Co.*

Daily Pour Sizes:

841 m³

Concrete Yield:

2.3 m³*

**best result of all pours*





3D Screeding





3D Screeding





Texturing and Curing



Texturing and Curing



1 Operator

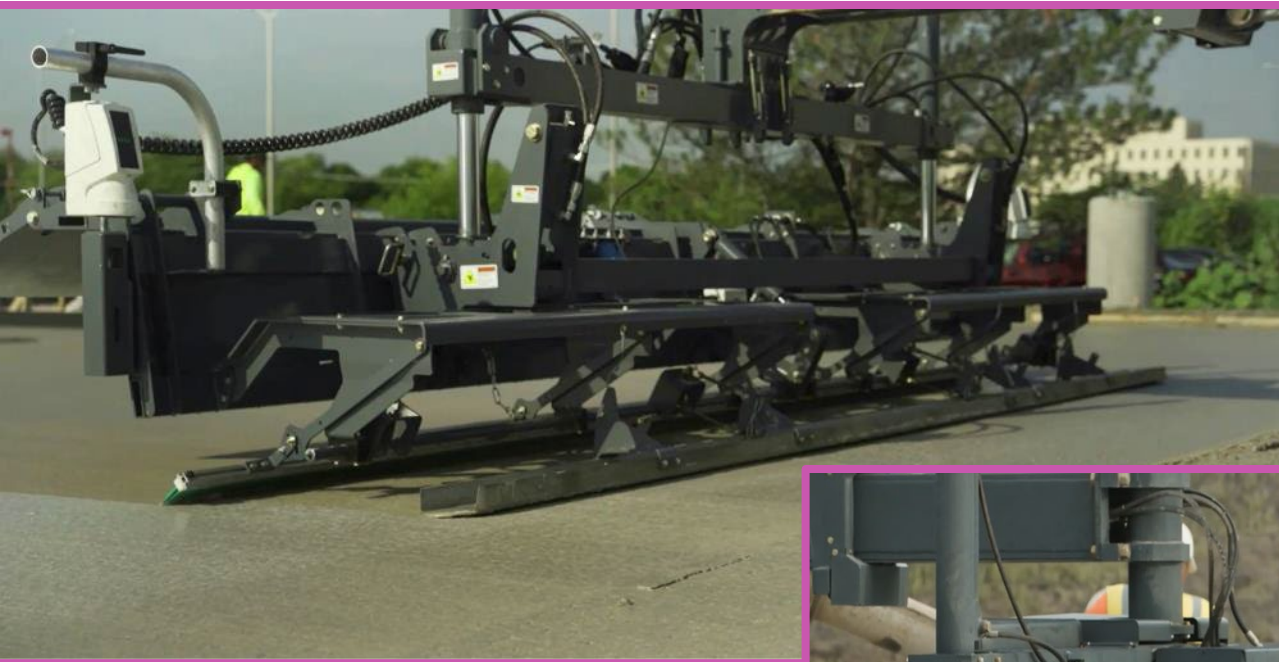
Bull Floats / Textures / Applies Cure

All in one 6 m x 4.25 m pass





Float - Texture - Cure



- **Evenly Broom**
To desired texture
- **Timely Application of Cure**
Consistent coverage
Less waste

Curing

Plastic shrinkage cracking is commonly associated with hot weather concreting, but it can also occur when the surface concrete dries and shrinks because of rapid moisture loss.

- Plastic shrinkage cracks appear in the first few hours after concrete placement and typically before the finishing operations are complete.
- Preventative measures to effectively control surface evaporation, include:
 - Immediately apply a sprayable evaporation retardant



Kim Basham, P.E.

President, KB Engineering LLC



In Action



Thank You

Myron Hillock

mhillock@somero.com

